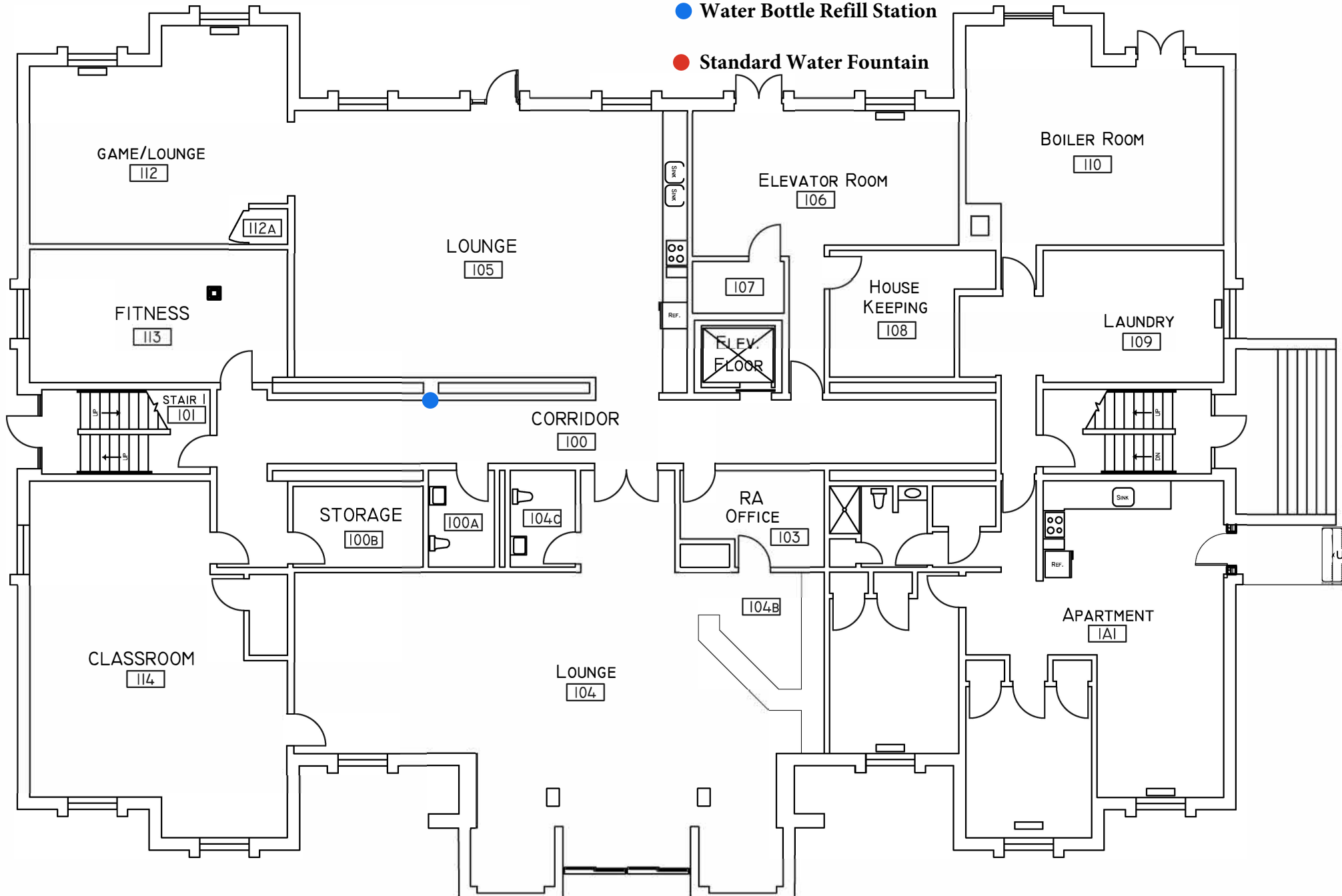


● Water Bottle Refill Station

● Standard Water Fountain

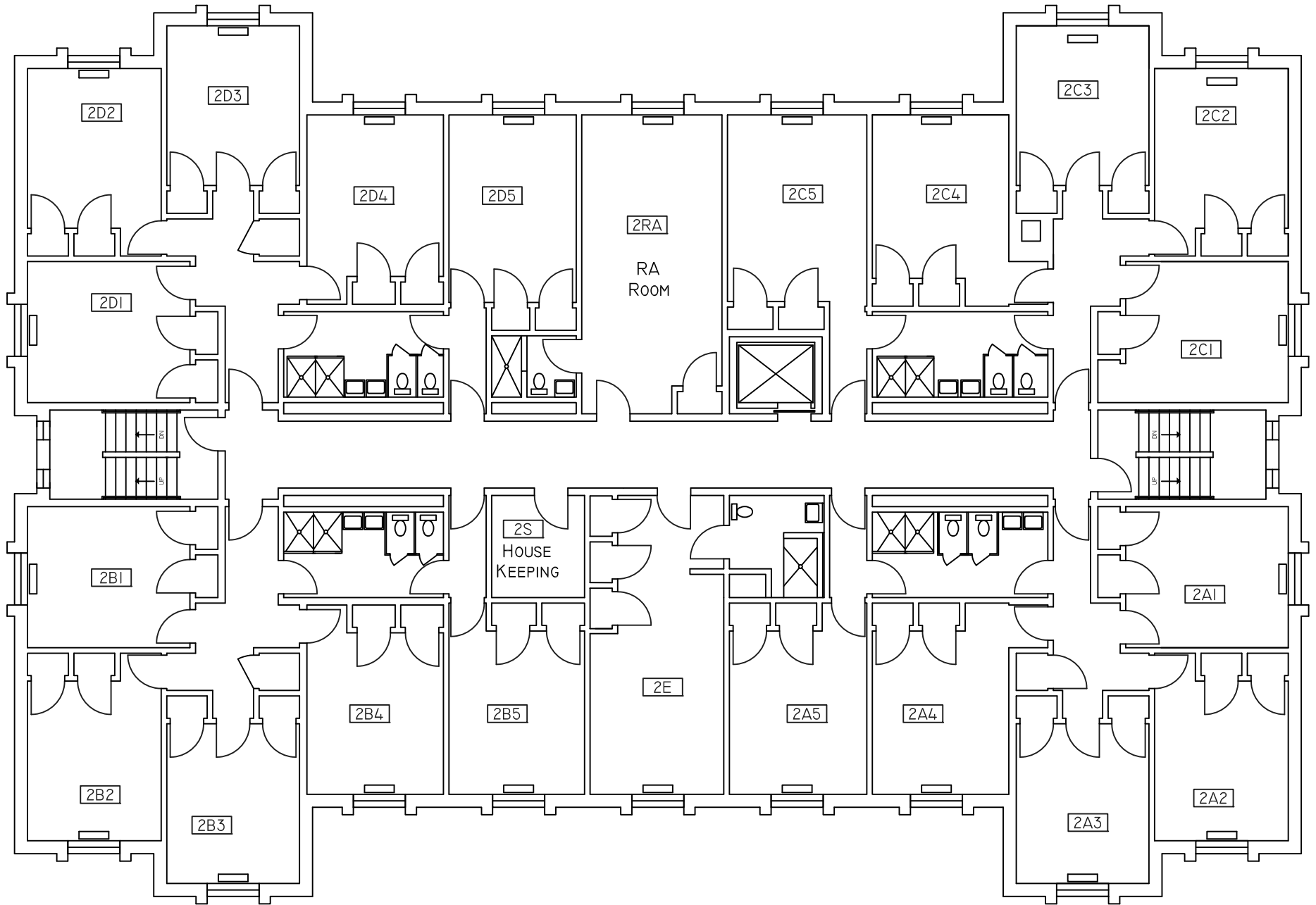


DWG. NO.:	REVISION DATE:
<b>A-1</b>	<b>07-17-2019</b>
	SCALE: <b>NTS</b>
BLDG. CODE:	DESIGN BY: <b>PLA</b>
<b>SV</b>	CHECKED BY: <b>JCD</b>

**RECORD FLOOR PLAN  
SEVERN HALL**

**FIRST FLOOR PLAN**

**SALISBURY UNIVERSITY**  
FACILITIES PLANNING & CAPITAL PROJECTS  
ARCHITECTURAL AND ENGINEERING SERVICES  
1101 CAMDEN AVENUE  
SALISBURY, MARYLAND 21801  
410 - 543 - 6215

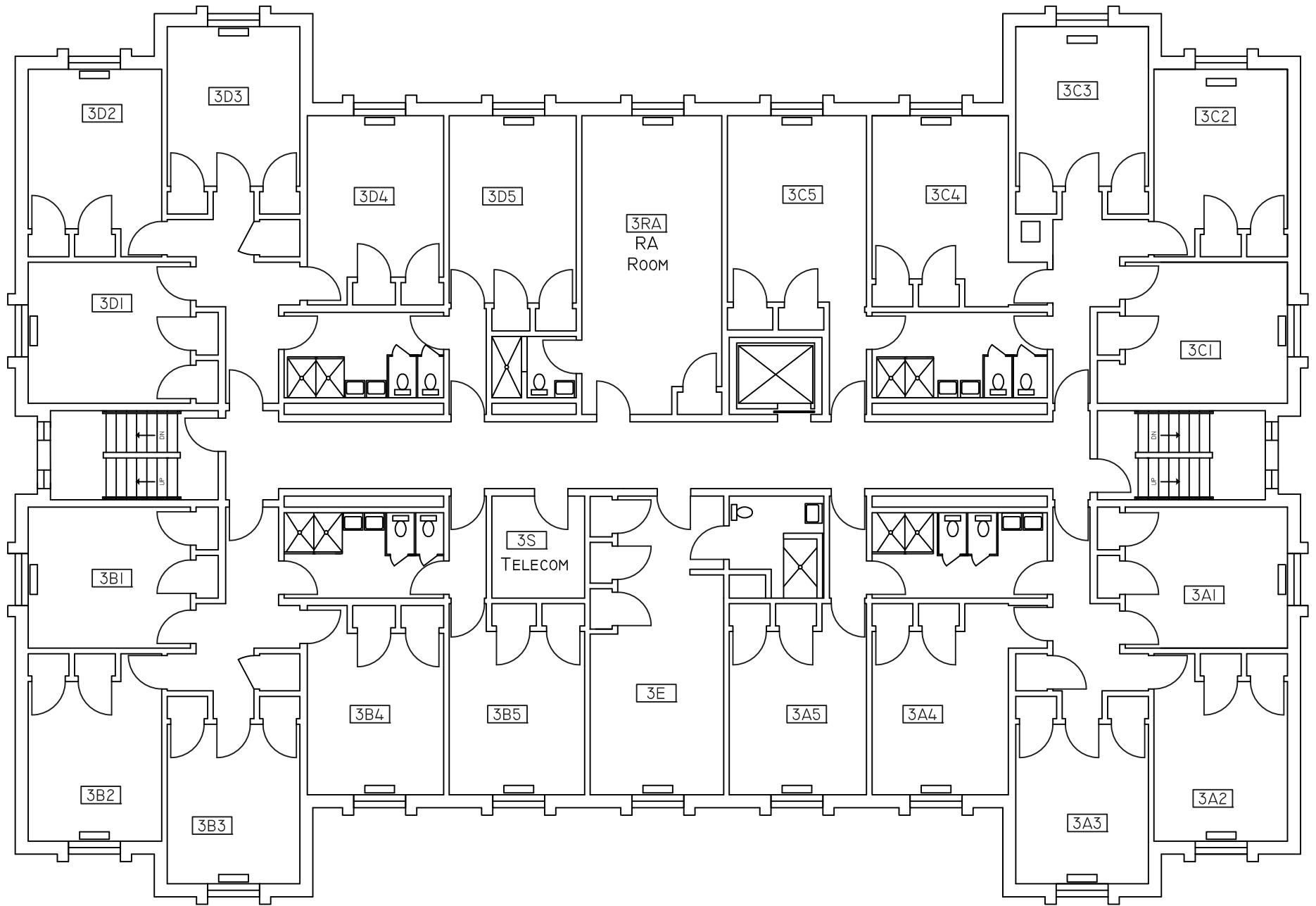


DWG. NO.:	REVISION DATE:
<b>A-2</b>	07-17-2019
BLDG. CODE:	SCALE:
<b>SV</b>	NTS
	DESIGN BY:
	PLA
	CHECKED BY:
	JCD

RECORD FLOOR PLAN  
SEVERN HALL

SECOND FLOOR PLAN

**SALISBURY UNIVERSITY**  
 FACILITIES PLANNING & CAPITAL PROJECTS  
 ARCHITECTURAL AND ENGINEERING SERVICES  
 1101 CAMDEN AVENUE  
 SALISBURY, MARYLAND 21801  
 410 - 543 - 6215



DWG. NO.:

**A-3**

BLDG. CODE:

**SV**

REVISION DATE:

**07-17-2019**

SCALE:

**NTS**

DESIGN BY:

**PLA**

CHECKED BY:

**JCD**

**RECORD FLOOR PLAN  
SEVERN HALL**

**THIRD FLOOR PLAN**

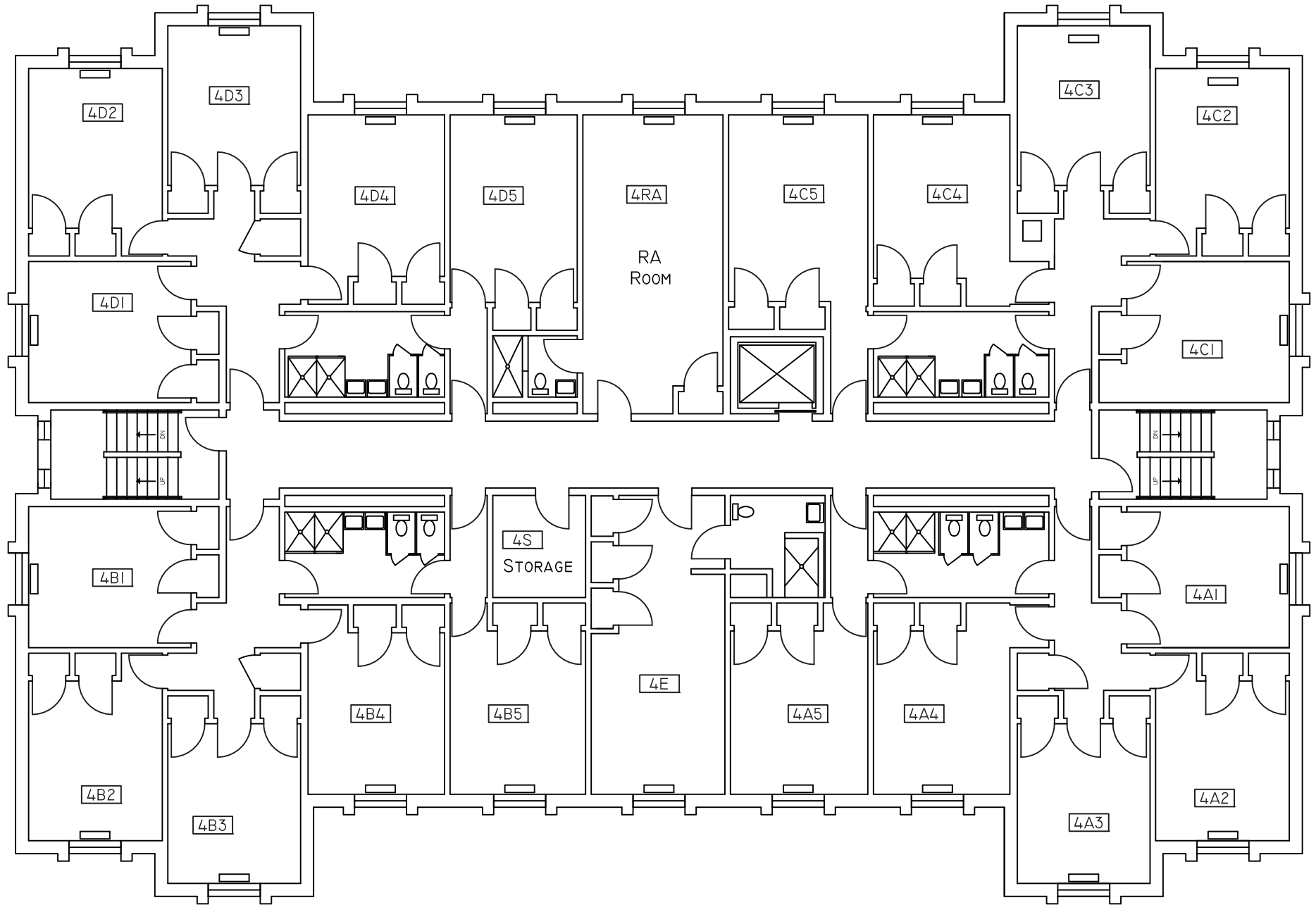
**SALISBURY UNIVERSITY**

FACILITIES PLANNING & CAPITAL PROJECTS  
ARCHITECTURAL AND ENGINEERING SERVICES

1101 CAMDEN AVENUE

SALISBURY, MARYLAND 21801

410 - 543 - 6215



DWG. NO.:

**A-4**

BLDG. CODE:

**SV**

REVISION DATE:

**07-17-2019**

SCALE:

**NTS**

DESIGN BY:

**PLA**

CHECKED BY:

**JCD**

**RECORD FLOOR PLAN  
SEVERN HALL**

**FOURTH FLOOR PLAN**

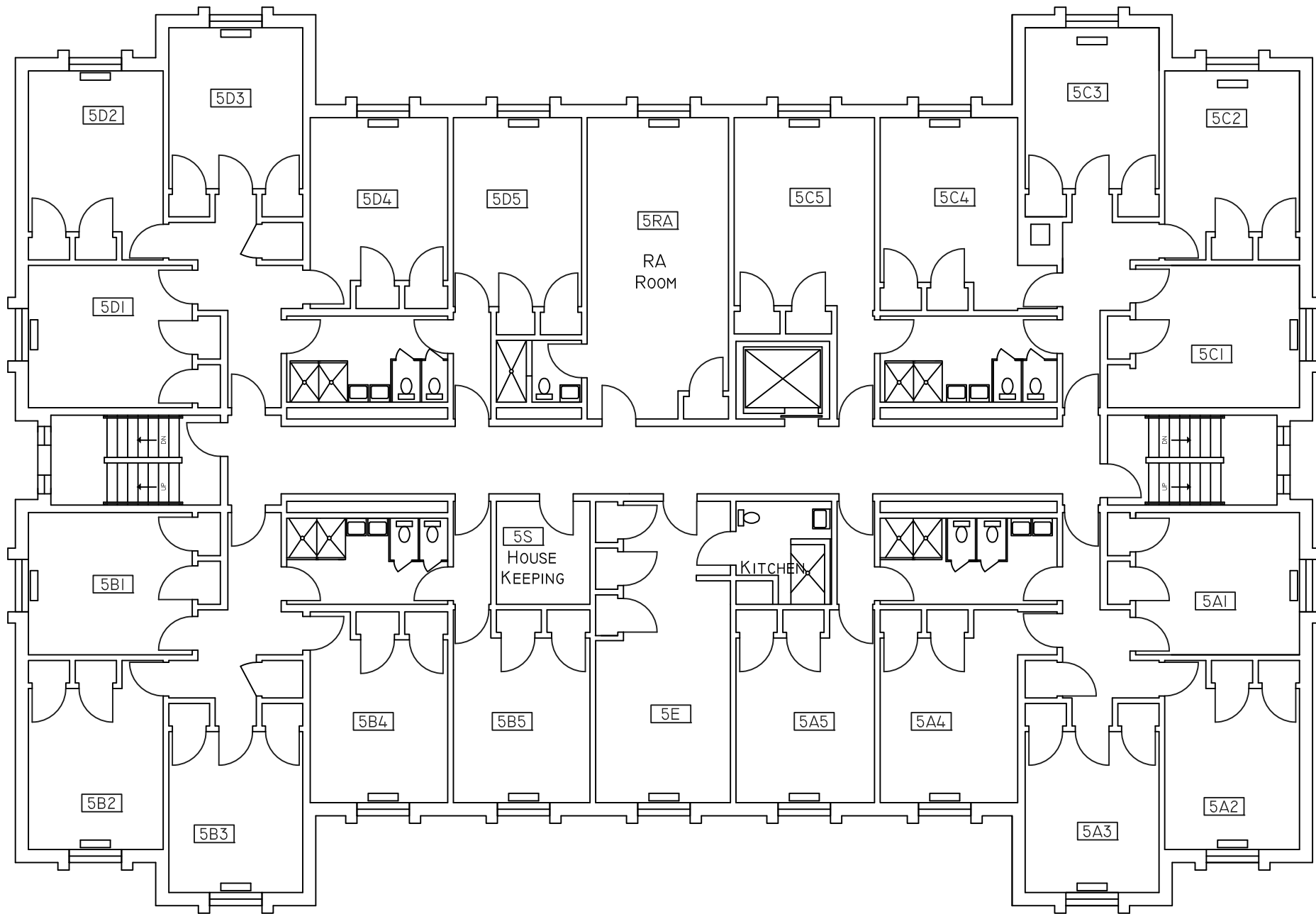
**SALISBURY UNIVERSITY**

FACILITIES PLANNING & CAPITAL PROJECTS  
ARCHITECTURAL AND ENGINEERING SERVICES

1101 CAMDEN AVENUE

SALISBURY, MARYLAND 21801

410 - 543 - 6215



DWG. NO.:

**A-5**

BLDG. CODE:

**SV**

REVISION DATE:  
**07-17-2019**

SCALE: **NTS**

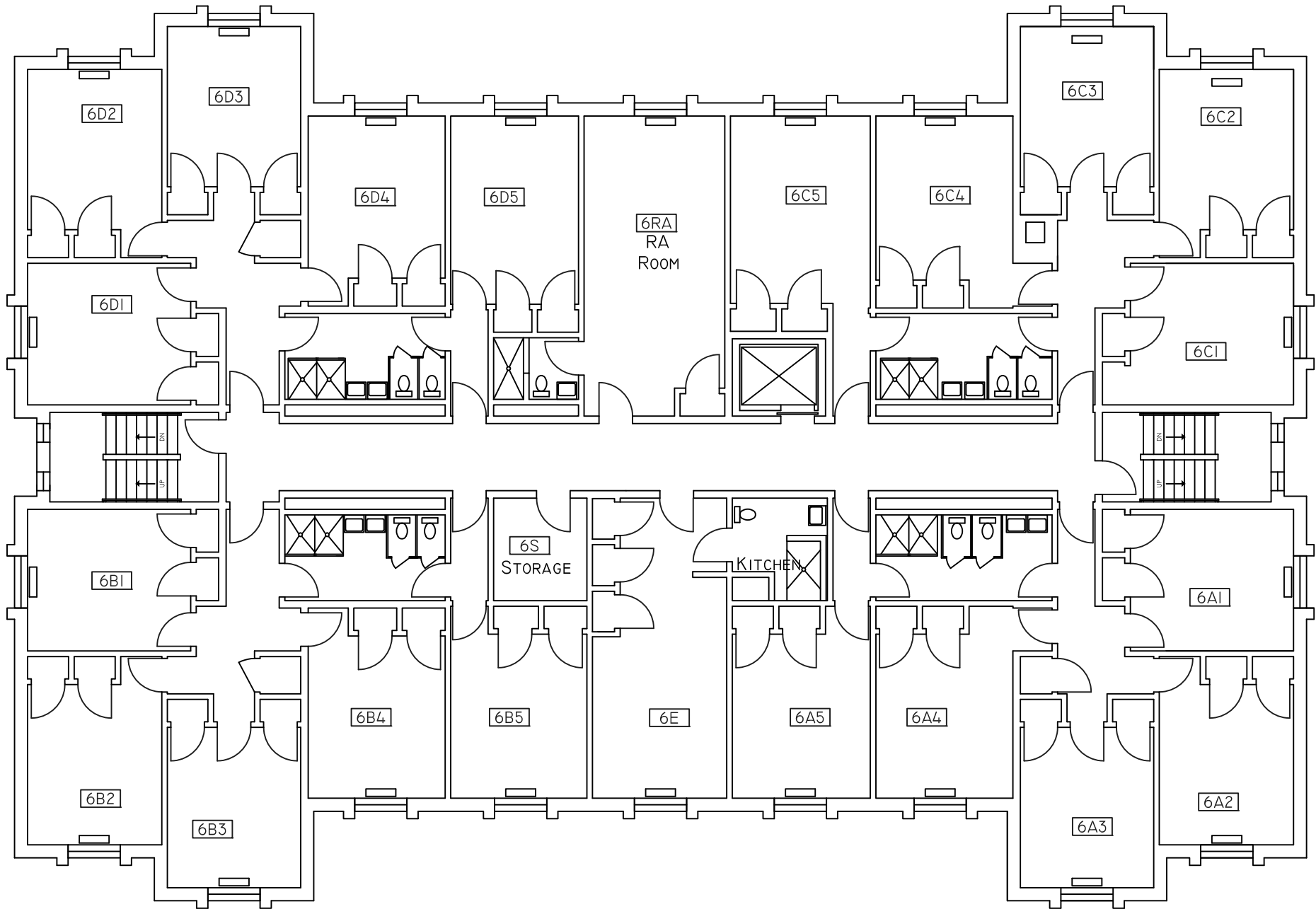
DESIGN BY: **PLA**

CHECKED BY: **JCD**

**RECORD FLOOR PLAN  
SEVERN HALL**

**FIFTH FLOOR PLAN**

**SALISBURY UNIVERSITY**  
 FACILITIES PLANNING & CAPITAL PROJECTS  
 ARCHITECTURAL AND ENGINEERING SERVICES  
 1101 CAMDEN AVENUE  
 SALISBURY, MARYLAND 21801  
 410 - 543 - 6215



DWG. NO.:	REVISION DATE:
<b>A-6</b>	<b>07-17-2017</b>
BLDG. CODE:	SCALE:
<b>SV</b>	<b>NTS</b>
	DESIGN BY:
	<b>PLA</b>
	CHECKED BY:
	<b>JCD</b>

**RECORD FLOOR PLAN  
SEVERN HALL**

**SIXTH FLOOR PLAN**

**SALISBURY UNIVERSITY**  
 FACILITIES PLANNING & CAPITAL PROJECTS  
 ARCHITECTURAL AND ENGINEERING SERVICES  
 1101 CAMDEN AVENUE  
 SALISBURY, MARYLAND 21801  
 410 - 543 - 6215